

# *norweco*<sup>®</sup>

## **SINGULAIR<sup>®</sup> BIO-KINETIC<sup>®</sup>**

WASTEWATER TREATMENT SYSTEM WITH SERVICE PRO<sup>®</sup> CONTROL CENTER

# **MODELS 960 AND TNT OWNER'S MANUAL**

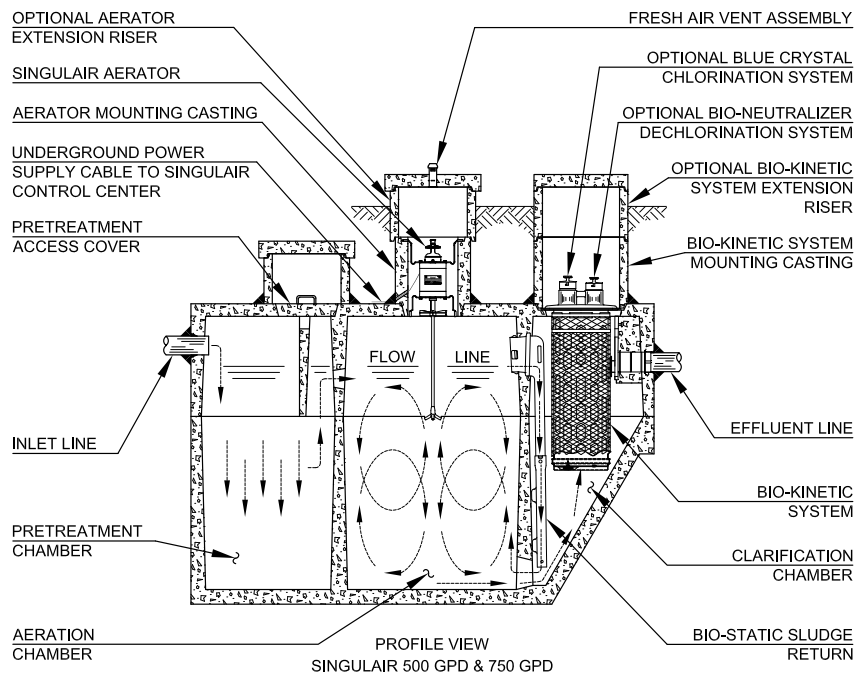
### **INTRODUCTION**

The Singulair system is the finest equipment available and utilizes the most up-to-date wastewater treatment technology. It is a sound investment that protects you and the environment. Please take the time to familiarize yourself with the contents of this manual.

### **HOW THE SINGULAIR<sup>®</sup> SYSTEM WORKS**

Developed to serve homes and small businesses beyond the reach of city sewers, the Singulair system employs the extended aeration process. Similar to the treatment method used by most municipal wastewater treatment facilities, this process involves a natural, biological breakdown of the organic matter in wastewater.

Wastewater enters the pretreatment chamber where anaerobic bacterial action combines with the effects of gravity to precondition the waste before it flows into the aeration chamber. Once in the aeration chamber, aerobic bacteria utilize the organic matter in the wastewater to biologically convert the waste into stable substances. Following aeration, flow is transferred to the clarification chamber where the effects of gravity settle out biologically active material. The Bio-Static sludge return, located in the clarification chamber, creates hydraulic currents that gently transfer settled particles back to the aeration chamber. As clarified liquids pass through the Bio-Kinetic system, they are filtered, settled and flow equalized. As a result, complete pretreatment, aeration, clarification and final filtration are assured. The Singulair system reliably protects you, your property and the environment.



### **FEATURES AND ADVANTAGES**

Singulair tanks are reinforced precast concrete, manufactured by the licensed Norweco distributor. Internal walls and baffles are cast-in-place to insure uniformity and maximum strength. Risers and access covers are either heavy duty plastic or concrete construction. All components within the system that will contact the wastewater are constructed entirely of molded plastic, stainless steel or rubber.

The Singulair aerator is powered by a 1725 RPM, 115 volt, 60 hertz, single-phase, fractional horsepower motor. It is the only electrically powered component in the Singulair system. The aerator has been designed specifically for use in the Singulair system. It costs less to operate and consumes fewer kilowatt hours of electricity than most major appliances.

Singulair aerators are supplied with a Service Pro control center with MCD technology. The NEMA rated control center contains a power switch and time clock that control aerator operation. The local distributor's name, address and telephone number are displayed on the control center cover.

All system controls and necessary owner information are conveniently located at your fingertips.

Non-mechanical flow equalization and final filtration is accomplished within the Singulair tank by the Bio-Kinetic system. This revolutionary device is installed in the clarification chamber and connected to the system outlet. Optional chlorination and dechlorination may be included in the Bio-Kinetic system if required. All Singulair components work together to assure complete pretreatment, aeration, clarification and final filtration.

## SINGULAIR® SYSTEM PERFORMANCE

Rivaling the performance of the most advanced wastewater treatment plants in the world, the Singulair system complies with USEPA wastewater treatment guidelines for secondary treatment systems and meets all requirements of NSF/ANSI Standard 40. In ecologically sensitive areas, the most stringent effluent standards are 10 mg/L CBOD and 10 mg/L TSS. Rated Class I after successfully completing the 7 month Standard 40 test protocol, the Model 960 system averaged effluent of 6 mg/L CBOD and 10 mg/L TSS. The Model TNT system averaged effluent of 4 mg/L CBOD, 9 mg/L TSS and 12 mg/L Total Nitrogen.

## OPERATIONAL REQUIREMENTS

The Singulair system is designed to treat only domestic wastewater. Domestic wastewater is defined as the waste generated from a typical residence. This includes flows originating from: bathtubs, clothes washers, dishwashers, drinking fountains, water coolers, food grinders, kitchen sinks, lavatories, mop basins, service sinks, shower stalls, sinks, wash sinks, water closets and whirlpool baths. While the use of bio-degradable detergents is recommended, the Singulair system has been designed to handle any reasonable amount of bathroom, kitchen or laundry waste. However, some care should be exercised to insure that non-biodegradable and/or toxic materials are not disposed of via the domestic wastewater plumbing. Do not use the plumbing system for disposal of lint, cooking grease, scouring pads, diapers, sanitary napkins, cotton balls, cotton swabs, cleaning rags, dental floss, strings, cigarette filters, rubber or plastic products, paints and thinning agents, gasoline, motor oil, drain cleaners or other harsh chemicals. These items could plug portions of the plumbing, interfere with biological treatment, accumulate in the treatment system and adversely affect system performance. Never connect roofing down spouts, footer drains, sump pump piping, garage and basement floor drains or water softener backwash to the domestic wastewater plumbing or the treatment system. Water softener backwash will interfere with biological treatment and must be disposed of separately.

## ELECTRICAL REQUIREMENTS

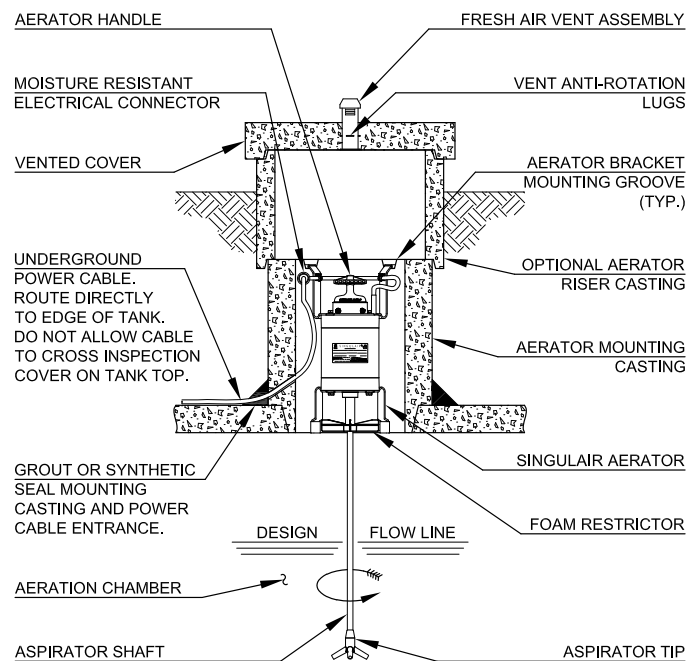
Each Singulair control center must be wired to a dedicated 115 VAC, single-phase circuit at the main electrical service panel. A 15 amp circuit is recommended (10 amp minimum). A pictorial wiring diagram is provided inside the control center enclosure. All electrical work must be performed in accordance with the requirements of the National Electrical Code and all applicable local codes. Electrical connections should be made only by a qualified electrician following proper procedures and using safe tools.

**CAUTION: Any time service is required, first shut off the dedicated circuit breaker in the main electrical service panel. Next, shut off the power switch in the Singulair control center. Failure to do so could result in personal injury or equipment damage.**

## SINGULAIR® AERATOR

The aerator has been specifically designed for use in the Singulair system and includes special alloy and molded plastic parts to prolong aerator life. Aerator bearings are pre-lubricated and sealed. Singulair aerators are installed in a concrete mounting casting above the aeration chamber. Fresh air enters the aerator through four intake ports located under the aerator handle. The air is drawn down the hollow aspirator shaft where it is introduced below the liquid surface. Only the molded plastic aspirator and the lower portion of the stainless steel aspirator shaft are submerged.

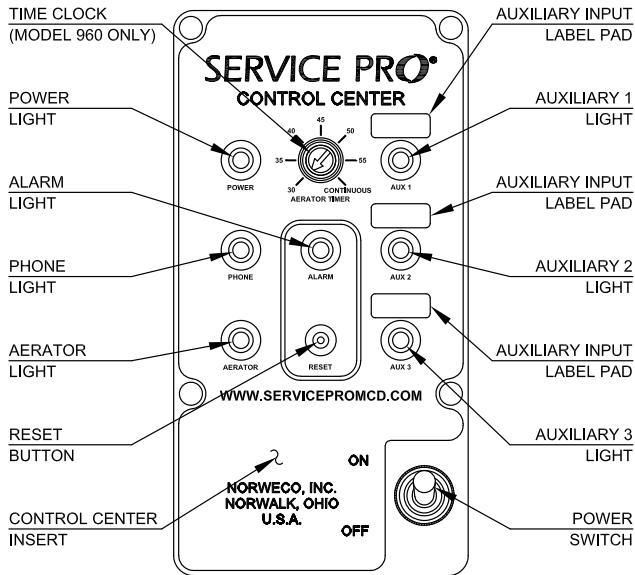
The aerator is not designed to run under water and will automatically shut off if a high water condition occurs. If the liquid rises to the level of the foam restrictor, the control center will shut off power to the aerator. Next, an automatic diagnostic sequence begins, as outlined in the section titled "Service Pro Control Center".



Each Singulair aerator is a precision engineered electro-mechanical device. Do not remove it from its installed position. Do not attempt any type of repair. Contact your Singulair service provider if service is needed. Unauthorized tampering or repair will void important provisions of the limited warranty and exchange program.

## FRESH AIR VENTING SYSTEM

An aerator vent assembly is cast into the concrete access cover above each aerator. The vent assembly supplies fresh air to the aerator, which is drawn through the aspirator and into the wastewater. Finished landscaping should be maintained six inches below the top of the vented access cover and graded to drain runoff away from the cover. Do not allow plants, shrubbery, mulch or landscaping of any type to restrict the flow of air to the vent assembly or obstruct the access cover.



## SERVICE PRO® CONTROL CENTER

Every Singulair aerator is supplied with a prewired UL Listed Service Pro control center featuring MCD technology to permit fully automatic aerator operation. The control center provides MONITORING, COMPLIANCE and DIAGNOSTIC functions complete with telemetry for communication with the Service Pro remote monitoring center. If an alarm condition occurs for any reason within the Singulair system or monitored auxiliary equipment, the red alarm light will flash. If aerator operation has been interrupted, the Service Pro control center will attempt to restart the aerator every five minutes for two hours. If the aerator does not restart after two hours, the audible alarm will sound. If the Singulair system is covered by a Service Pro monitoring agreement, the Singulair service provider will be automatically notified and the alarm condition will be displayed on the remote monitoring center website, [www.servicepromcd.com](http://www.servicepromcd.com). Each control center for the Model 960 treatment system is supplied with a time clock adjustable in five minute increments up to continuous run. This clock is factory preset to run 30 minutes per hour and should only be adjusted by an authorized Singulair service provider. Each control center for the Model TNT system is supplied with a non-adjustable time clock.

## SERVICE PRO® MONITORING CENTER

When connected to a telephone line, the control center will automatically notify the Service Pro monitoring center of any service required by the Singulair system or accessory components. The Service Pro monitoring center will automatically record the time and date of any alarm condition and post this information to your system's history record accessible at [www.servicepromcd.com](http://www.servicepromcd.com). The monitoring center will also notify your Singulair service provider that the system needs attention and record the time and date when service is performed. All information regarding your system is available to you on the secure, password protected Service Pro website. Contact your Singulair service provider for your user name and password.

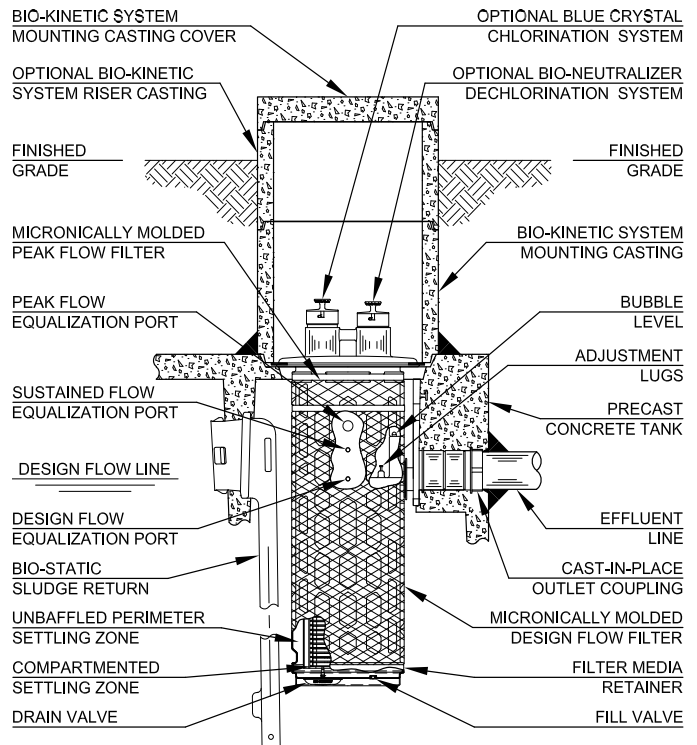
**NOTE:** The control center regularly communicates with the Service Pro monitoring center using your telephone line and a toll free number. If the control center is using the line when you attempt to place a call, a high pitched digital communication signal will be heard. Hang up all telephones sharing the line and wait a few seconds. This will automatically disconnect the control center and make the line available for use.

## BIO-STATIC® SLUDGE RETURN

Each Bio-Static sludge return is installed in the aeration/clarification chamber wall. Aeration chamber hydraulic currents enter the sludge return(s) and transfer solids from the clarification chamber back to the aeration chamber for additional treatment. The Bio-Static sludge return accomplishes resuspension and return of settled solids without disturbing the contents of the clarification chamber.

## BIO-KINETIC® SYSTEM

Bio-Kinetic systems provide non-mechanical flow equalization through all plant processes. The Bio-Kinetic system contains 3 separate filtration zones, 8 independent settling zones, optional chlorination and dechlorination tablet feed systems and serves as its own chlorine contact chamber. When used with Blue Crystal disinfecting tablets, the performance of the Bio-Kinetic system as a chlorination device is certified to NSF/ANSI Standard 46, Section 11. All components are manufactured from plastic or rubber. Your service provider has the necessary training, tools and equipment for removal and cleaning. If your Bio-Kinetic system is in need of service, contact your service provider. During each semi-annual service inspection, your service provider will remove and clean the Bio-Kinetic system or replace it with a unit from their service stock.



## NON-MECHANICAL FLOW EQUALIZATION

The patented design of the Bio-Kinetic system provides non-mechanical flow equalization for the Singulair wastewater treatment plant. Equalization reduces incoming hydraulic surges (e.g. typical shower of 10 minutes duration, bathtub discharge of 5 minutes duration, clothes washer discharge of 2 minutes duration and dishwasher discharge of 2 minutes duration) throughout the system. The flow equalization provided by the Bio-Kinetic system causes wastewater to be held upstream of the final outlet during hydraulic surges, which preserves treatment integrity and enhances system operation. The actual rate of equalization varies and depends upon specific loading patterns and the duration of each flow surge. At the design loading pattern used during the NSF/ANSI Standard 40 performance evaluation, the Singulair system equalizes all flow an average of 48%. As a result, hydraulic surges and periods of high wastewater flow are automatically reduced to protect the environment and all treatment plant processes on a demand use, as needed, basis.

## BLUE CRYSTAL® RESIDENTIAL DISINFECTING TABLETS

If local regulations require, an initial supply of Blue Crystal disinfecting tablets will be placed in the Bio-Kinetic system chlorine feed tube(s) at system start-up. Specifically formulated for use in the Singulair system, Blue Crystal disinfecting tablets provide efficient and reliable disinfection when effluent chlorination is desirable. Manufactured from calcium hypochlorite, Blue Crystal disinfecting tablets provide effective, economical bacteria killing power. Liquid entering the Bio-Kinetic system contacts the installed Blue Crystal disinfecting tablets, just downstream of the equalization ports. A fully charged feed tube will last an average of six months. During each semi-annual inspection, your Singulair service provider will check system operation, the rate of tablet consumption and install tablets during routine service inspections.

**NOTE:** USEPA guidelines state “On the average, satisfactory disinfection of secondary wastewater effluent can be obtained when the chlorine residual is 0.5 ppm after 15 minutes contact.” Retention time must comply with the controlling regulatory jurisdiction.

**CAUTION:** *The improper handling of Blue Crystal tablets may cause personal injury or property damage. Keep out of the reach of children and do not allow the tablets or feed tube to contact skin, eyes, or clothing. Tablets may be fatal if swallowed and tablet dust is irritating to the eyes, nose and throat. Do not handle the tablets or feed tubes without first carefully reading the product container label, MSDS information and the handling and storage instructions. Mixing of chemicals may cause a violent reaction leading to fire or explosion. For additional information about Blue Crystal tablets contact your Singulair service provider.*

## BIO-NEUTRALIZER® DECHLORINATION TABLETS

In environmentally sensitive areas, environmental regulations may require the use of Bio-Neutralizer dechlorination tablets. Manufactured as an efficient and dependable means to chemically neutralize both free and combined chlorine, Bio-Neutralizer dechlorination tablets provide consistent reduction or elimination of chlorine residual without unnecessarily reducing the level of dissolved oxygen in the treatment system effluent. Bio-Neutralizer dechlorination tablets utilize a unique chemical mixture for chlorine reduction and environmental protection. As liquid passes through the final discharge zone of the Bio-Kinetic system, the flow contacts the installed Bio-Neutralizer tablets and residual chlorine is removed from the system effluent. A fully charged Bio-Neutralizer feed tube will last an average of six months. During each semi-annual inspection, your Singulair service provider will check system operation, the rate of tablet consumption and install tablets during routine service inspections.

**CAUTION:** *Bio-Neutralizer tablets or feed tubes should not be mixed with Blue Crystal tablets. Do not handle the tablets or feed tubes without first carefully reading the product container label, MSDS information and the handling and storage instructions. For additional information about Bio-Neutralizer tablets contact your Singulair service provider.*

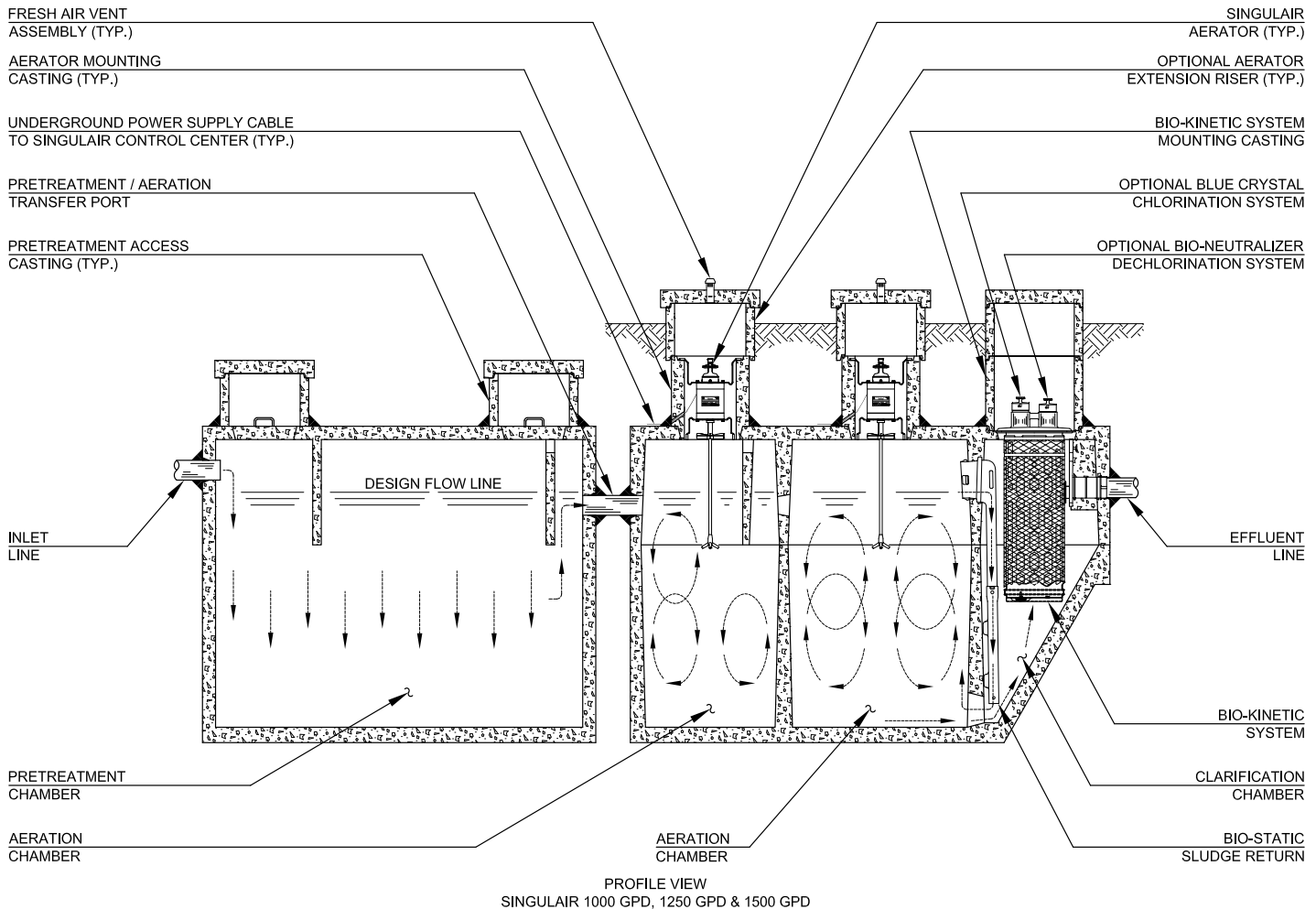
## NO OWNER MAINTENANCE

The Singulair system is inspected and serviced by a local, factory-trained service provider, therefore, no owner maintenance is required during the warranty period. The Singulair system does not require pumping as often as a septic tank. Under normal use only the pretreatment chamber should be pumped. How often pumping is necessary depends on system use. The local Singulair service provider will inspect the aeration chamber contents and plant effluent at six month intervals to determine if the pretreatment chamber is discharging excessive solids. Every three years, the pretreatment chamber should be inspected. The pretreatment chamber will normally require pumping at three to five year intervals. Contact your local service provider prior to tank pumping for complete information on removal of equipment, access to individual chambers, coordination of services and proper disposal of tank contents. A tank pumping service licensed by the local regulatory agency must be used for removal and disposal of tank contents. The tank pumper should consult with local authorities to determine the proper disposal method.

If a period of intermittent use, or an extended period of non-use of the Singulair system is anticipated, contact your Singulair service provider for instructions. Your service provider has comprehensive Singulair service instructions and has been factory-trained in troubleshooting procedures. Contact your service provider if you require service or information regarding tank pumping.

## SINGULAIR® SERVICE PROGRAM

Semi-annual service inspections, at six month intervals for the first two years of system operation, are provided by your local Norweco distributor and are included in the original purchase price of the Singulair system. Costs for travel and labor are not charged to the owner. During an inspection, each mechanical aerator, Bio-Kinetic system and other plant components are serviced as outlined in the Singulair Service Manual. After the initial two year service program is completed, the local service provider will provide continued service at the owner's option. The service program should be renewed by the owner to insure maximum system performance.



Ask your Singulair service provider about a renewable service contract. If you allow service coverage to expire, you can still obtain the professional assistance of a factory-trained technician. However, these special service calls will be performed on a time and materials basis. Professional service is important to proper system operation and should not be allowed to lapse. Be sure to consider the advantages of a renewable service contract.

The Singulair service provider will perform the following services during each service inspection:

- ✓ Check aerator operation
- ✓ Check aerator power consumption
- ✓ Check aerator air delivery
- ✓ Clean stainless steel aspirator shaft
- ✓ Clean aspirator tip
- ✓ Clean fresh air vent in concrete cover
- ✓ Inspect aeration chamber contents
- ✓ Check operation of control center
- ✓ Adjust time clock when required
- ✓ Remove the Bio-Kinetic system
- ✓ Scrape the clarification chamber
- ✓ Inspect the Bio-Static sludge return
- ✓ Inspect outlet coupling
- ✓ Install a clean Bio-Kinetic system
- ✓ Fill Blue Crystal feed tube
- ✓ Fill Bio-Neutralizer feed tube
- ✓ Inspect effluent quality
- ✓ Inspect outlet line
- ✓ Inspect ground water relief point
- ✓ Inspect effluent disposal system
- ✓ Complete 3-part service record
- ✓ Hang owner's record on front door
- ✓ Enter record into [www.servicepromcd.com](http://www.servicepromcd.com)
- ✓ Mail health department notification

## WARRANTY REGISTRATION

A Warranty Registration Card was included with the Model 206C aerator before it was shipped from the factory. If this card has not been returned to Norweco, complete and mail it immediately. If it is not returned within thirty days of the installation date, the three year limited warranty and lifetime aerator exchange program will begin on the date of component shipment from the factory.

Remove the aerator model number and serial number record card and store it in a safe location with this Owner's Manual for future reference. If it is necessary to call your service provider for service, make note of the information on the control center data plate and the aerator serial number before calling. Warranty and service records are cross-indexed by owner name, aerator serial number or control center serial number. Supplying the aerator serial number and control center serial number with the service request will give the service provider a ready reference so that changes in system ownership will not delay service.

## SINGULAIR® LIMITED WARRANTY

The Singulair aerator enjoys the distinction of being the only aerator on the market today backed by a lifetime warranty and exchange program. Each Singulair aerator, Service Pro control center, Bio-Kinetic system and any other components manufactured by Norweco, are warranted to be free from defects in material and workmanship, under normal use and service, for a period of three years from the date of purchase. The three year limited warranty is included in the original purchase price of every Singulair system. The comprehensive aerator exchange program offers Singulair owners a lifetime of protection. Owners with a Singulair system may exchange any aerator of any age for a replacement unit at a prorated cost. If the Singulair aerator or Service Pro control center fails, do not use or dismantle the unit. The local, licensed distributor has detailed warranty and exchange information and should be contacted for service or replacement instructions.

## SERVICE PRO® SECURITY LOG IN

For your convenience, record your [www.servicepromcd.com](http://www.servicepromcd.com) access information here:

|                   |                  |
|-------------------|------------------|
| <b>User name:</b> | <b>Password:</b> |
|-------------------|------------------|

## SUPPLEMENTAL SERVICE RECORD

For your reference, please document service performed on the following chart:

| DATE | DESCRIPTION |
|------|-------------|
|      |             |
|      |             |
|      |             |
|      |             |
|      |             |
|      |             |
|      |             |
|      |             |
|      |             |
|      |             |



*Engineering the future of water  
and wastewater treatment*

220 REPUBLIC STREET  
NORWALK, OHIO, USA 44857-1156  
TELEPHONE (419) 668-4471  
FAX (419) 663-5440  
[www.norweco.com](http://www.norweco.com)

**DISTRIBUTED LOCALLY BY:**

Norweco®, Norweco.com®, Singulair®, Modulair®, Travalair®, Singulair Green®, Lift-Rail®, Microsonic®, Bio-Dynamic®, Bio-Sanitizer®, Bio-Neutralizer®, Bio-Kinetic®, Bio-Static®, Bio-Gem®, Bio-Regeneration®, Bio-Perc®, Blue Crystal®, Bio-Max®, ClearCheck®, ChemCheck®, Service Pro®, Grease Buster® and "BUSTER" logo® are registered trademarks of Norwalk Wastewater Equipment Company, Inc.

©MMX NORWECO, INC.