

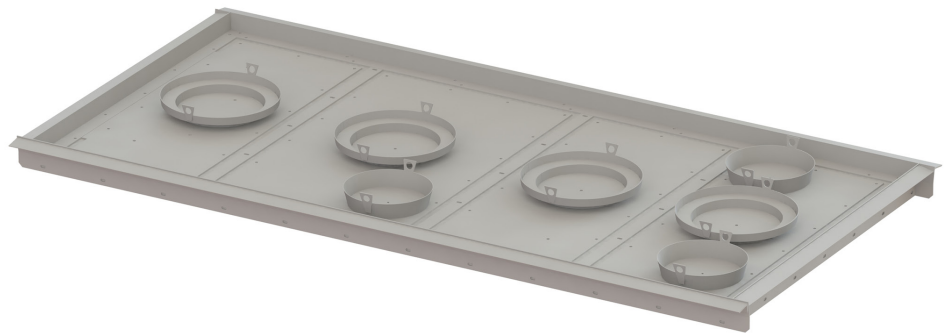


HYDRO-KINETIC[®] 1 PIECE, 4 CHAMBER AIR STRIP MOLD

Total Concrete Required: 3.84 cu. yd.
Top Half Weight: 2,193 lbs.
Bottom Half Weight: 13,380 lbs.
Total Tank Weight: 15,573 lbs.

Top Measurements

144 1/4" Long
73 1/4" Wide
7 7/8" Tall



Bottom Measurements

155" Long
85" Wide
85 3/4" Tall

