

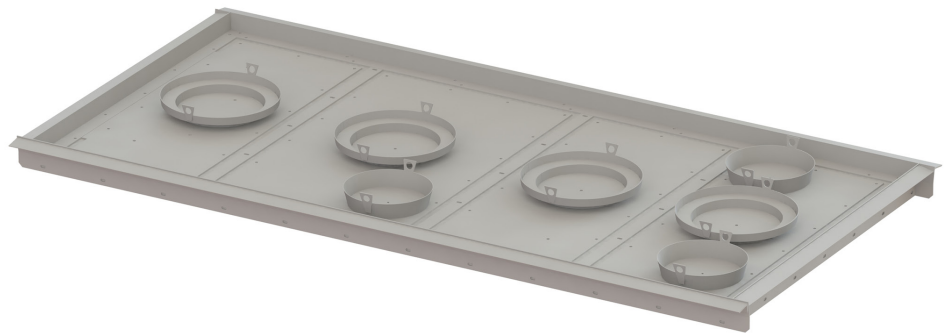
norweco[®]

HYDRO-KINETIC[®] 1 PIECE, 4 CHAMBER HYDRA-STRIP MOLD

Total Concrete Required: 3.84 cu. yd.
Top Half Weight: 2,193 lbs.
Bottom Half Weight: 13,380 lbs.
Total Tank Weight: 15,573 lbs.

Top Measurements

144 ¼" Long
73 ¼" Wide
7 ⅞" Tall



Bottom Measurements

155" Long
85" Wide
85 ¾" Tall

