

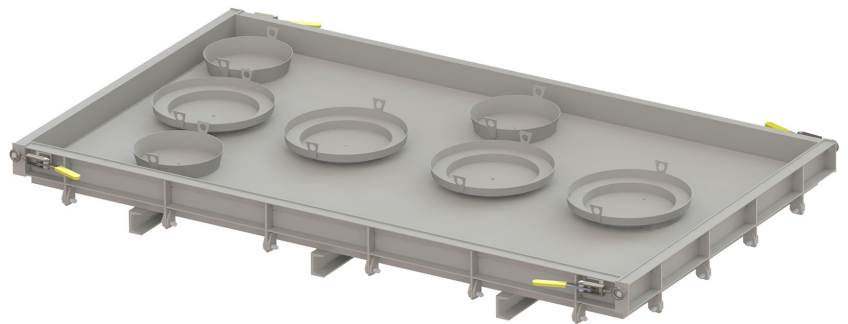


HYDRO-KINETIC® 1 PIECE, 4 CHAMBER LOW FLOW HYDRA-STRIP MOLD

Total Concrete Required: 3.2 cu. yd.
Top Half Weight: 1,685 lbs.
Bottom Half Weight: 11,106 lbs.
Total Tank Weight: 12,791 lbs.

Top Measurements

122 ½" Long
81 ½" Wide
11 ⅝" Tall



Bottom Measurements

134" Long
82 ⅞" Wide
91 ¾" Tall

