

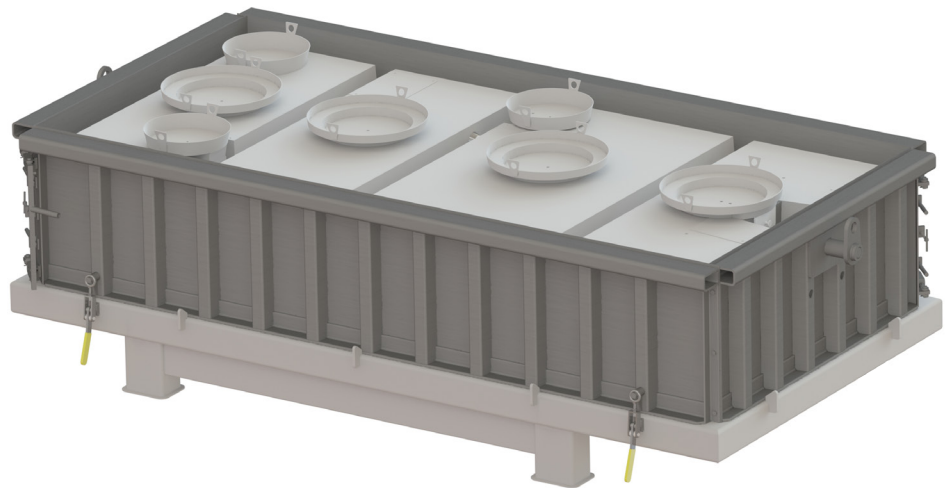


# HYDRO-KINETIC<sup>®</sup> 2 PIECE, 4 CHAMBER AIR STRIP MOLD

Total Concrete Required: 3.24 cu. yd.  
Top Half Weight: 2,042 lbs.  
Bottom Half Weight: 8,514 lbs.  
Total Tank Weight: 10,556 lbs.

## Top Measurements

156" Long  
83" Wide  
46 <sup>3</sup>/<sub>8</sub>" Tall



## Bottom Measurements

156" Long  
83" Wide  
61 <sup>3</sup>/<sub>4</sub>" Tall

