

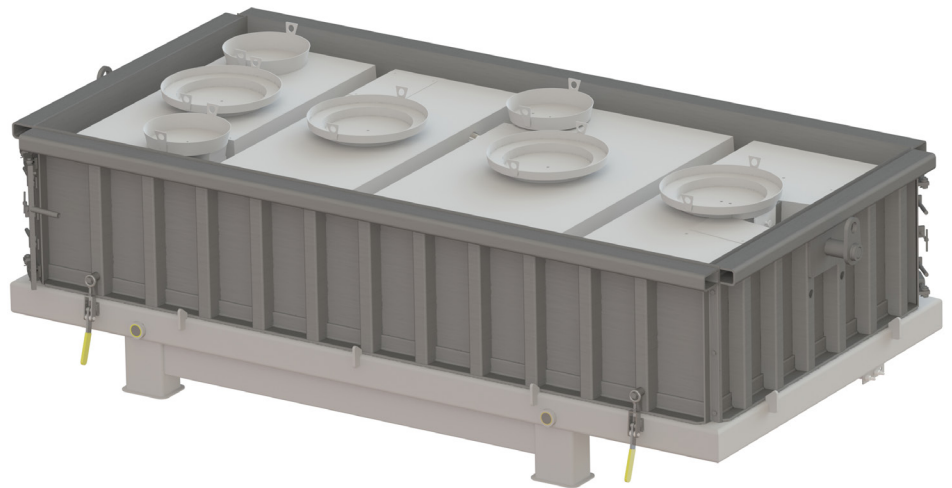


HYDRO-KINETIC[®] 2 PIECE, 4 CHAMBER HYDRA-STRIP MOLD

Total Concrete Required: 3.24 cu. yd.
Top Half Weight: 2,042 lbs.
Bottom Half Weight: 8,514 lbs.
Total Tank Weight: 10,556 lbs.

Top Measurements

156" Long
83" Wide
46 ³/₈" Tall



Bottom Measurements

156" Long
83" Wide
61 ³/₄" Tall

