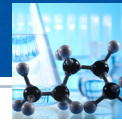


HYDRO-KINETIC BIO-FILM REACTOR®



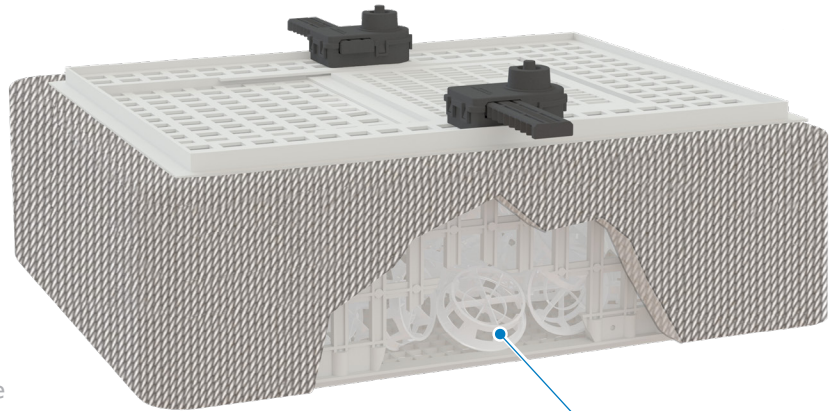
norweco®

*Engineering the future of water
and wastewater treatment*

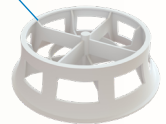
HYDRO-KINETIC BIO-FILM REACTOR®

A REVOLUTIONARY DESIGN THAT EMPLOYS INNOVATIVE HYDRO-KINETIC ATTACHED GROWTH TECHNOLOGY TO PRODUCE THE CLEANEST, MOST CONSISTENT EFFLUENT QUALITY FOR ANY ONSITE TREATMENT SYSTEM

The Hydro-Kinetic Bio-Film Reactor is designed to work in a wide variety of applications and is easily installed as a part of any onsite wastewater treatment system. Installation of the Hydro-Kinetic Bio-Film Reactor between the treatment tank and final disposal system significantly improves the effectiveness of the treatment process, producing superior effluent quality that can extend the life of the disposal system while meeting or exceeding the most stringent regulations.



THE REACTOR ELEMENT IS AN INTEGRAL COMPONENT OF THE HYDRO-KINETIC BIO-FILM REACTOR. THE TREATMENT PROCESS BEGINS WHEN FLOW ENTERS THE REACTOR WHERE IT MOVES DOWNWARD AND IS EVENLY DISTRIBUTED BENEATH OUR PATENTED REACTOR ELEMENTS. LIQUID THEN TRAVELS UPWARD THROUGH PROPRIETARY ATTACHED GROWTH FILTRATION MEDIA WHERE FINAL POLISHING TAKES PLACE. THIS INNOVATIVE TREATMENT PROCESS PRODUCES UNSURPASSED EFFLUENT QUALITY TO INSURE THE PUREST WATER IS RETURNED TO THE ENVIRONMENT. THE HYDRO-KINETIC BIO-FILM REACTOR IS TODAY'S ANSWER FOR THE PROTECTION OF TOMORROW'S ENVIRONMENT.



The unique design of the Hydro-Kinetic Bio-Film Reactor meets the structural requirements of IAPMO/ANSI Z1000 and has the capacity to treat up to 800 gallons per day. The rotationally molded, durable, UV stabilized, high density polyethylene reactor incorporates our patented internal and external ribbed walls to insure uncompromising structural integrity and long-term performance.

The Hydro-Kinetic Bio-Film Reactor weighs less than 500 pounds and can be easily delivered in a standard full-size pick-up truck for installation at difficult job sites with just a backhoe. This compact device is equipped with built-in connections for inlet and outlet piping, allowing for easy installation. Optional connection points on the inlet and outlet walls allow additional chambers to be attached upstream or downstream. Designed to improve the performance of any onsite wastewater treatment system, the innovative attached growth technology begins working immediately upon startup. Completely non-mechanical, the reactor requires no electricity and operates continuously with minimal maintenance.

A rotationally molded riser with a sealed lid is included with the Hydro-Kinetic Bio-Film Reactor. The riser allows easy service of the reactor from grade. The Hydro-Kinetic Bio-Film Reactor is user friendly, easy to install and maintain, and offers an unparalleled performance boost for any onsite wastewater treatment system.

norweco®

*Engineering the future of water
and wastewater treatment*

**220 Republic Street
Norwalk, Ohio, U.S.A. 44857
PH: 419.668.4471
FAX: 419.663.5440
www.norweco.com**

Progress Through Service Since 1906

We engineer, manufacture, install and maintain advanced water and wastewater treatment technologies for residential properties, communities and commercial properties that are not connected to sewer lines. Norweco treatment systems are in service all over the world.

Norweco®, Norweco.com®, Singulair®, Modulair®, Travalair®, Singulair R3®, Singulair Green®, Ribbit Rivet®, Hydro-Kinetic®, Hydro-Kinetic Bio-Film Reactor®, Evenair®, Lift-Rail®, Microsonic®, Bio-Dynamic®, Bio-Sanitizer®, Bio-Neutralizer®, Bio-Kinetic®, Bio-Static®, Bio-Gem®, Bio-Max®, Bio-Perc®, Blue Crystal®, Phos-4-Fade®, Enviro-C®, Nitro-Buster®, ClearCheck®, ChemCheck®, Tri-Max®, Hydra-Max®, Service Pro®, MCD®, TNT®, WASP®, Grease Buster® and "BUSTER" logo are all registered trademarks of Norwalk Wastewater Equipment Company, Inc.